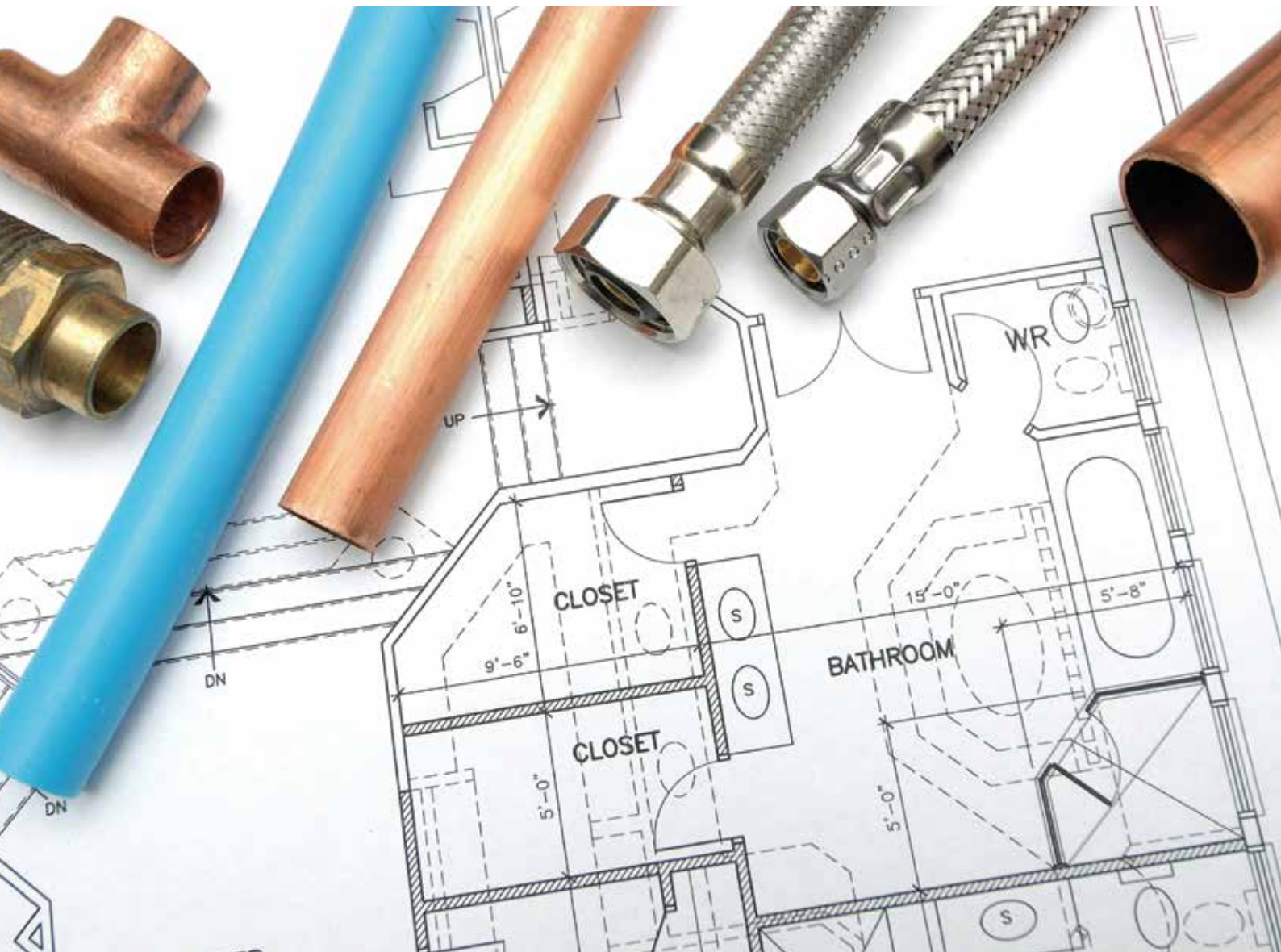


# GlenFarrow



COMMERCIAL PLUMBING

# Commercial Plumbing

GlenFarrow provides plumbing services for our clients ranging in scale from domestic fit-outs through to large-scale commercial washrooms or re-fits of industrial premises. We work with architects and developers and with large, national businesses on fit-outs of shops and factories.

## Scope of Supply:

- Servicing and repairs
- Sanitary ware installations
- Hot and cold water systems designed and installed
- Commercial catering and wash room installations
- Above ground drainage and waste systems designed and installed
- We supply and install - copper, stainless steel, galvanised, polyethylene, LCS and PVC pipe
- Extraction and filtration equipment supplied and installed
- Booster pumps and packaged pump stations
- Stainless steel sanitary ware supplied and installed
- Thermal lagging supplied and fitted

## Find out more:

To discuss your requirements or to arrange a site survey and quotation, contact:  
**Chris Steadman** on 01775 722327 or [chris.steadman@glenfarrow.co.uk](mailto:chris.steadman@glenfarrow.co.uk)

## About GlenFarrow

With over forty years' experience, GlenFarrow has developed a reputation for prompt, reliable service. Our expertise covers five core areas:

- Biomass Boilers
- Commercial Plumbing and Heating
- Electrical
- Irrigation
- Waste Water Treatment

Our skilled staff can undertake major installations, refits or small upgrades, as well as contract servicing and emergency breakdown call out. We also offer full trade counter support across all core areas.