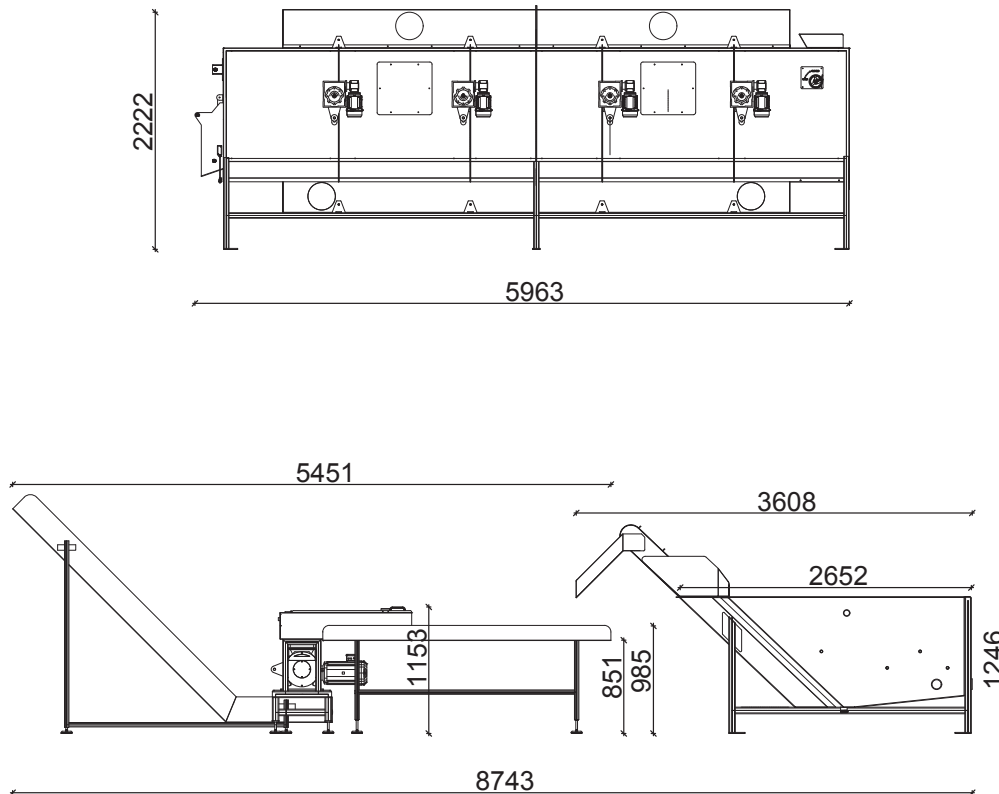


Technical specifications

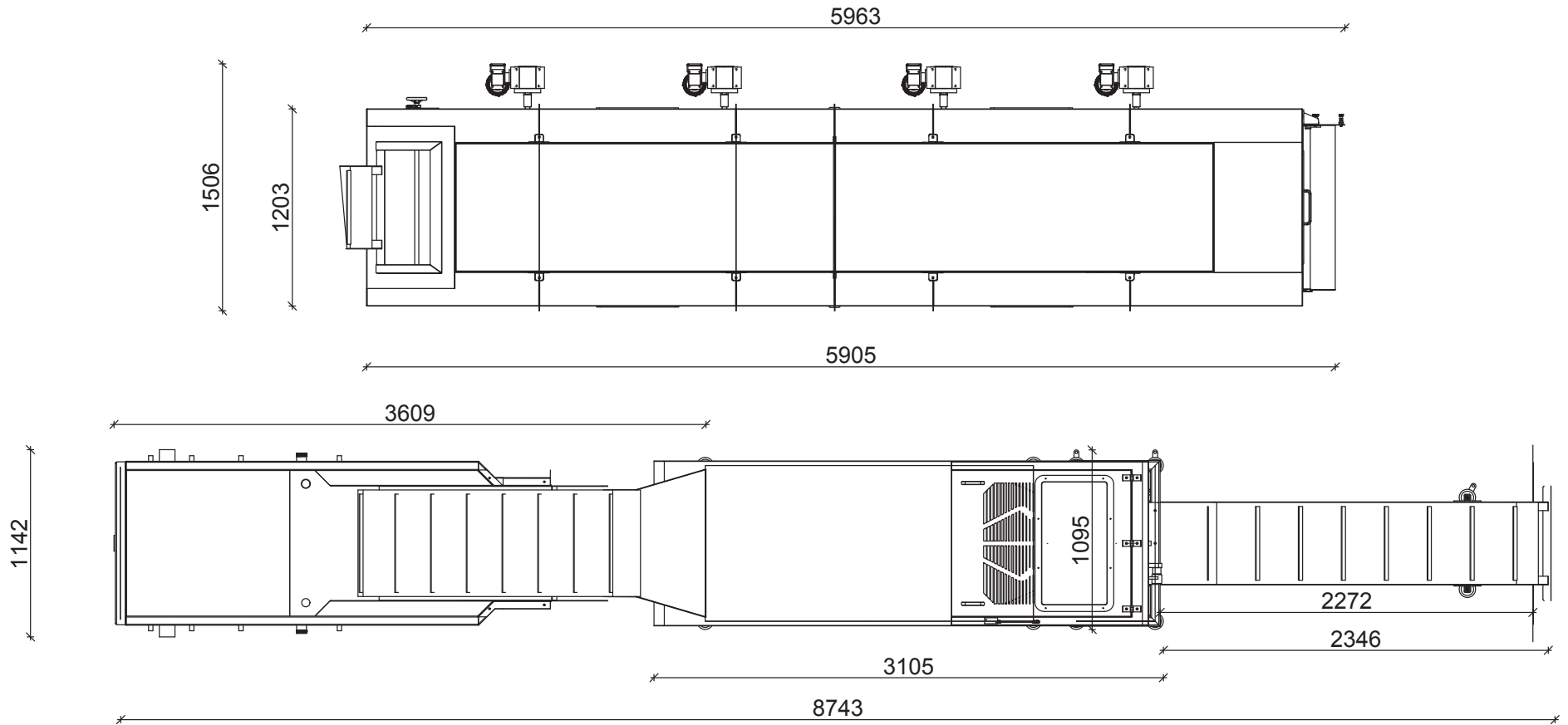


Seaweed Processing Plant

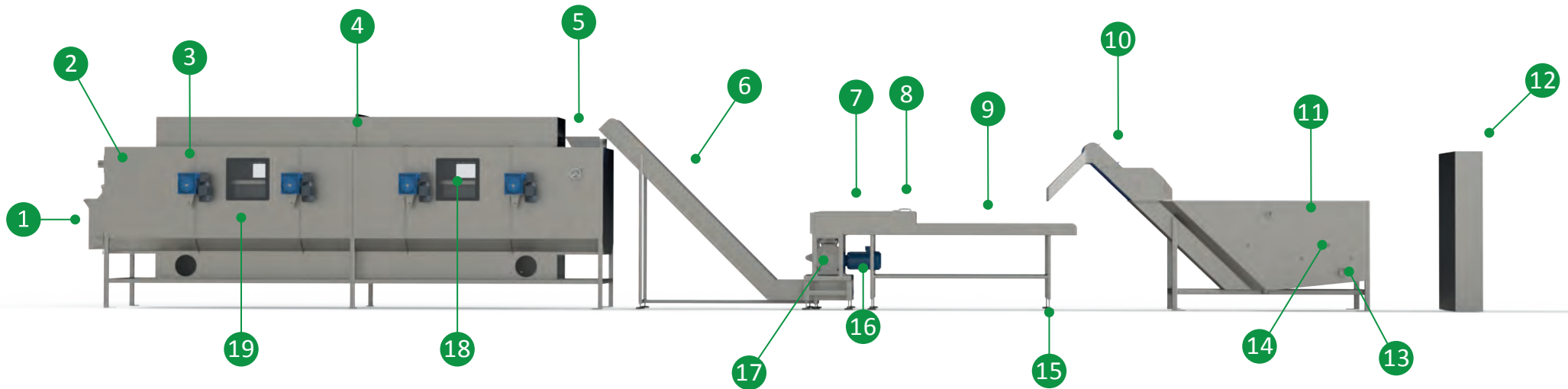
- Power: 28kW 400V AC/3PH/N/PE 32amp
- Weight: 8000kg approx. (Containerised)
- Washing via a dump washer
- Material chopping via rotary chopping unit
- Movement of material via multiple conveyors
- Drying via GF batch-fed dryer
- 304 grade stainless steel
- Food grade PU belting
- PLC controlled
- Recipe control for different variants of seaweed



Technical specifications

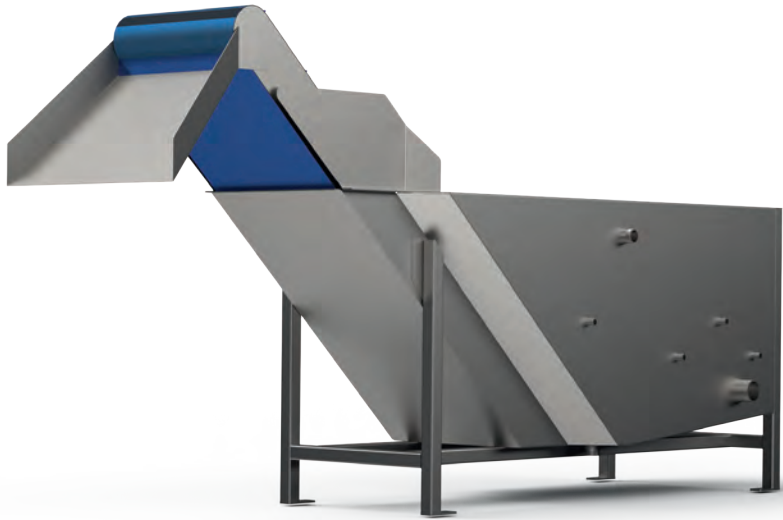


General overview



- | | | |
|--|--|---|
| ① Outfeed chute for Dolav | ⑦ Perspex viewing window | ⑭ Injection ports |
| ② Batch belt dryer | ⑧ Magnetic safety interlock switch | ⑮ Adjustable height conveyor legs |
| ③ Rotary paddle agitator double reduction gear motor | ⑨ Food grade inspection belt | ⑯ IE3 high efficiency motor |
| ④ Upper plenum chamber | ⑩ Blue mesh belt with PU edges | ⑰ High torque rotary chopping unit with speed control |
| ⑤ Dryer infeed | ⑪ Stainless steel dump washer | ⑱ Polycarbonate viewing windows |
| ⑥ Food grade flighted PVC belt | ⑫ Stainless steel touch screen control panel | |
| | ⑬ Pump feed ports | |

Key features

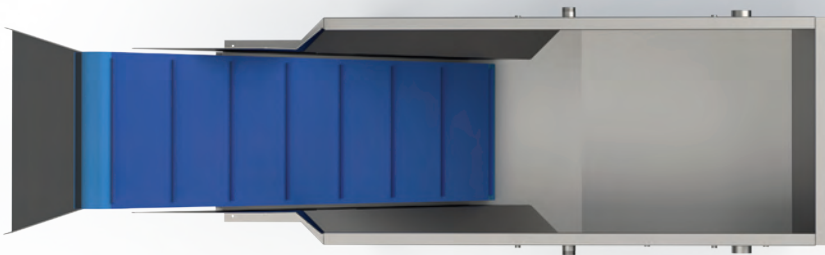


Dump washer

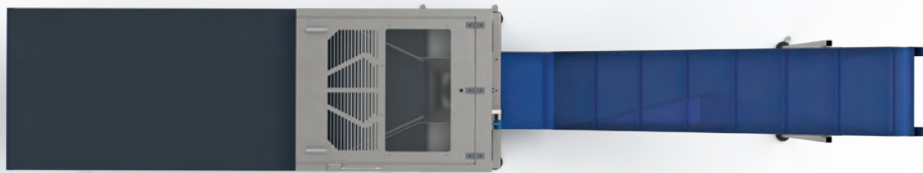
- Compressed air jets, CO₂ jets and controls
- Wash down jets with high flow stainless steel pump
- Full 304 stainless steel construction
- Air knife for excess water removal

Mesh belt conveyor

- Highly efficient IE3 geared motor
- Fully speed controllable
- Mesh belt ensures efficient draining



Key features



Inspection conveyor and chop unit

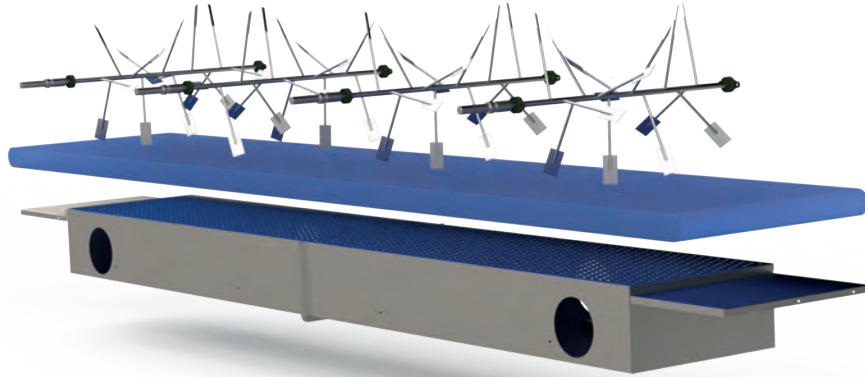


- Large speed controllable conveyor for easy inspection of product
- Safety housing complete with all necessary guards for chopping unit
- Speed controllable high torque chopping unit
- Robust 316 stainless steel design

Incline conveyor

- Speed controllable geared drive
- Flighted PU belt for reliable conveying of product
- Full 304 stainless steel frame and construction

Key features



Batch seaweed dryer

- Enclosed batch dryer made from 304 stainless steel
- Mesh high temperature belt for maximum airflow through product
- 4 x rotary agitators that are bi-directional for complete material movement and fast drying times
- Suitable for a variety of species
- Double plenum chambers for even airflow
- Butterfly valve for air flow control
- Large efficient speed controlled centrifugal fan and heat exchanger unit

Benefits of GlenFarrow

Complete turnkey solution



GlenFarrow has a number of departments including biomass, electrical and commercial plumbing and heating - this allows us to assist in many areas across the mechanical and engineering sector.

Fully customisable



Our seaweed processing plant is fully customisable upon request. From size and configuration to functionality, we work closely with our customers to tailor our products to their needs.

Full CAD drawings



We are able to produce full CAD drawings for all systems to ensure the best use of space and top quality installations.

National network of engineers



We have a national network of in-house service engineers so you can be rest assured that GlenFarrow will be there for you wherever you are based in the UK.



Find us:

Glen Farrow UK Ltd
Glendum Close
Pinchbeck
Spalding
Lincolnshire
PE11 3DQ

What 3 words: [///ample.rectangular.transmits](http://ample.rectangular.transmits)

01775 722327
info@glenfarrow.co.uk
glenfarrow.co.uk

