



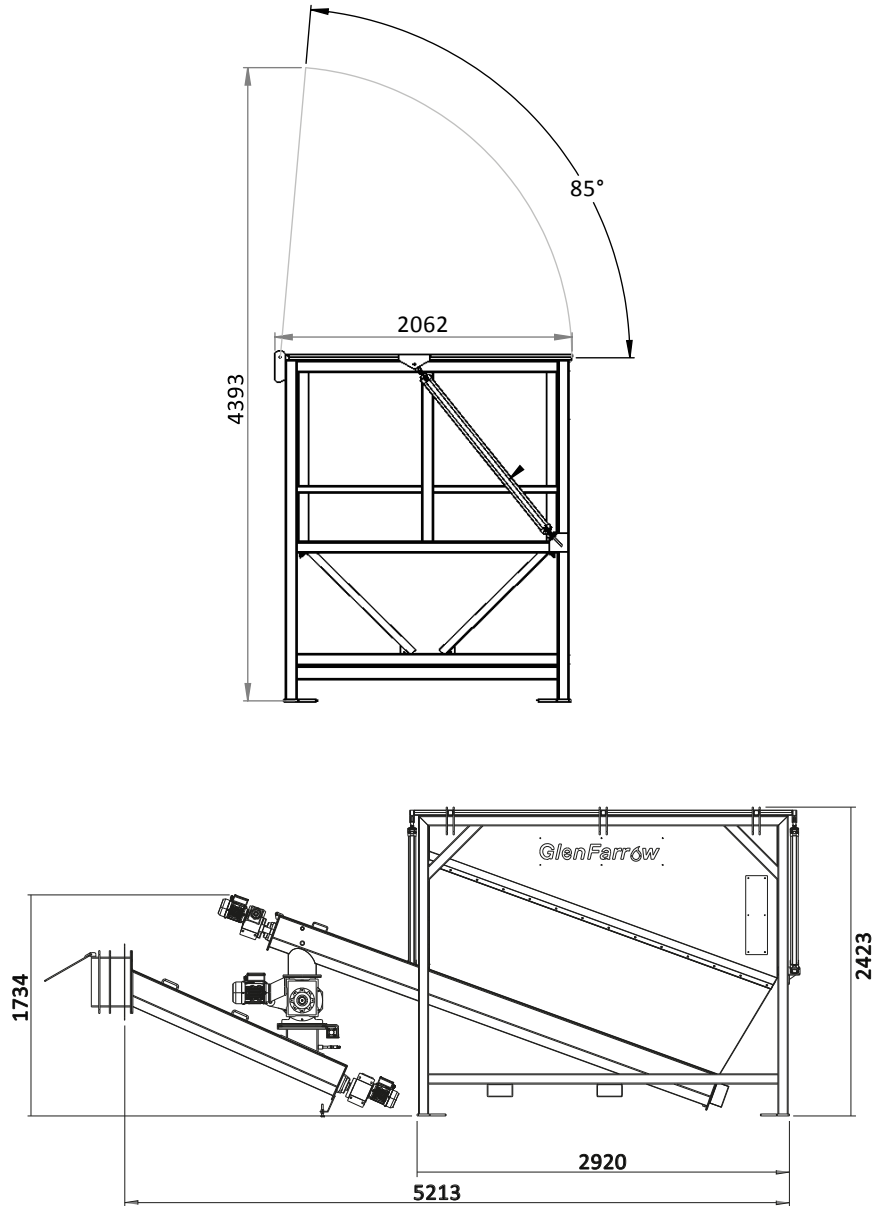
# Technical specifications



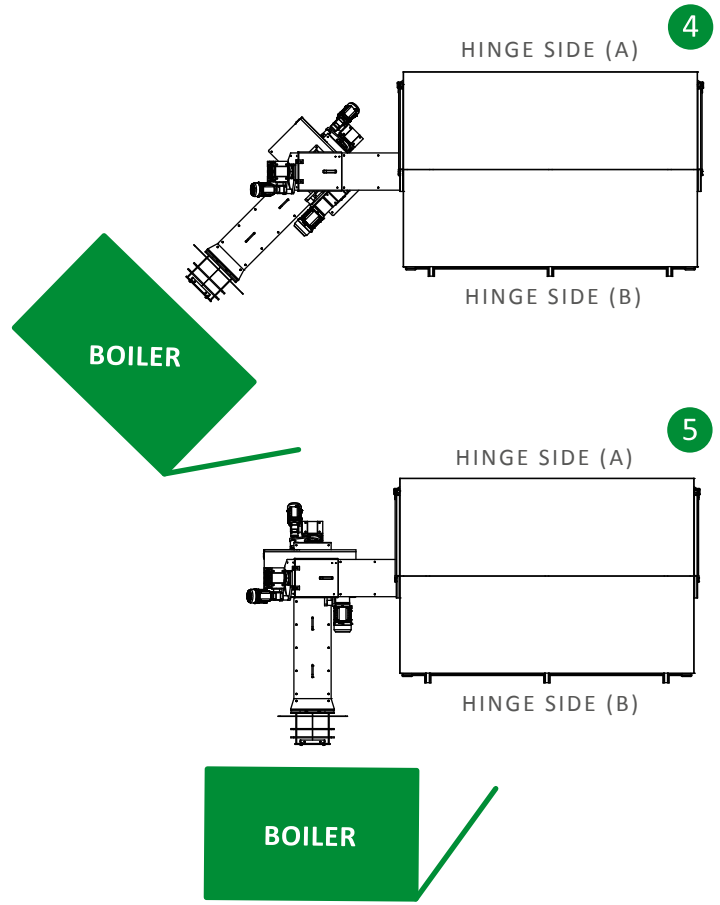
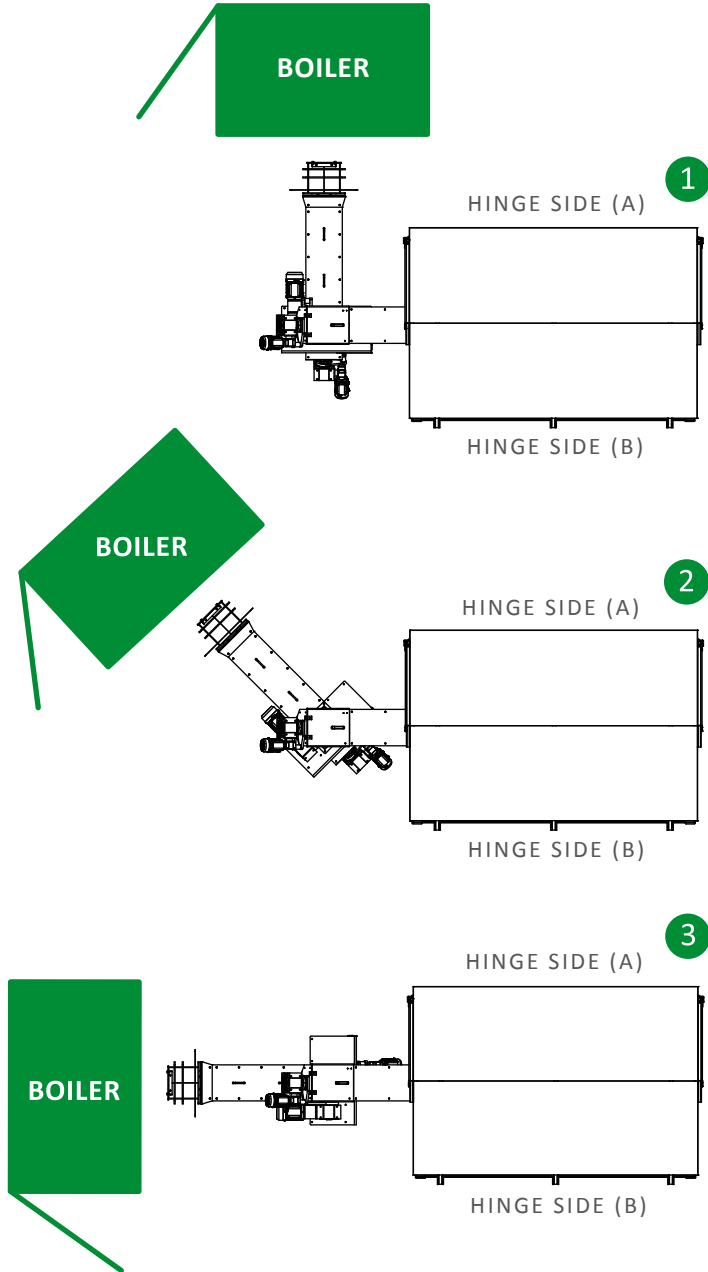
## GFAF

- GF boiler compatibility: 125kW - 400kW
- Power supply: 230V Ac/N/PE 32 amp\*
- Weight (excluding boiler): 1750 kg
- Fuel (automatic mode): G30 or G50 wood chip, arb or other chip
- Fuel (batch mode): Various combinations and sizes of wood and straw in line with relevant boiler emissions certification
- Hopper capacity: 6m<sup>3</sup>
- Can be retrofitted or installed as a new system

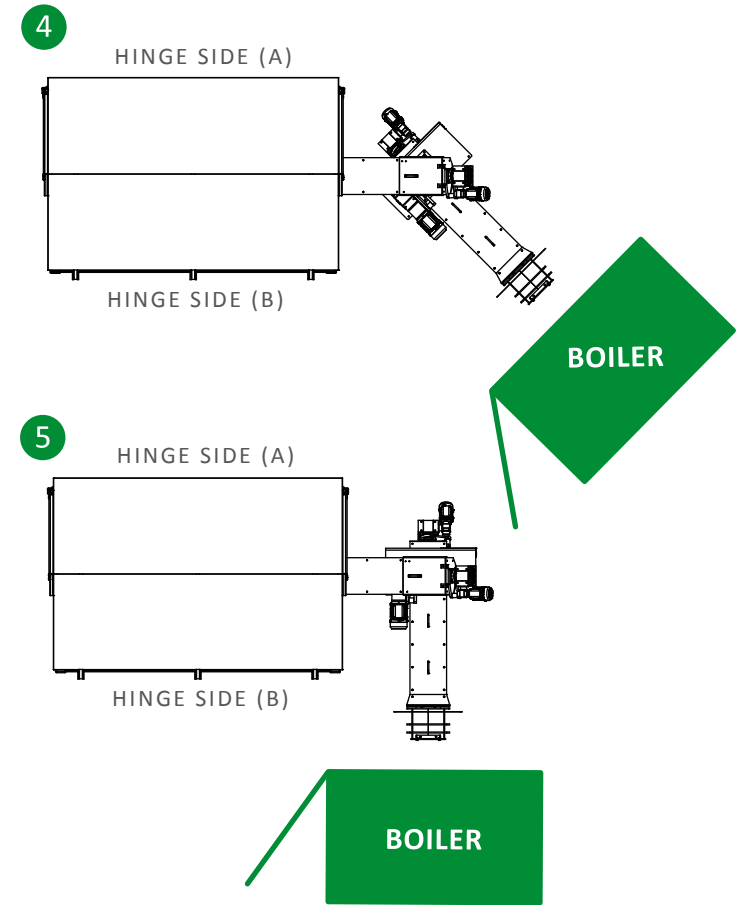
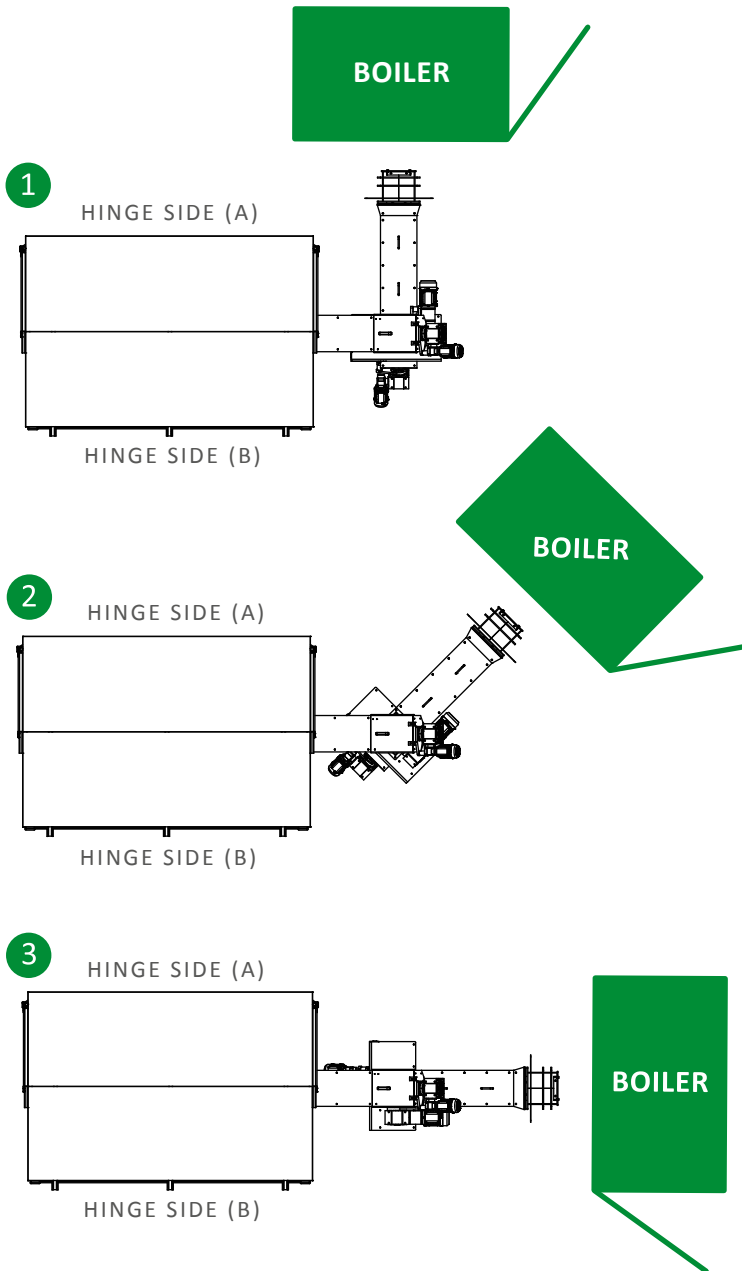
\*This includes boiler electrical supply requirements



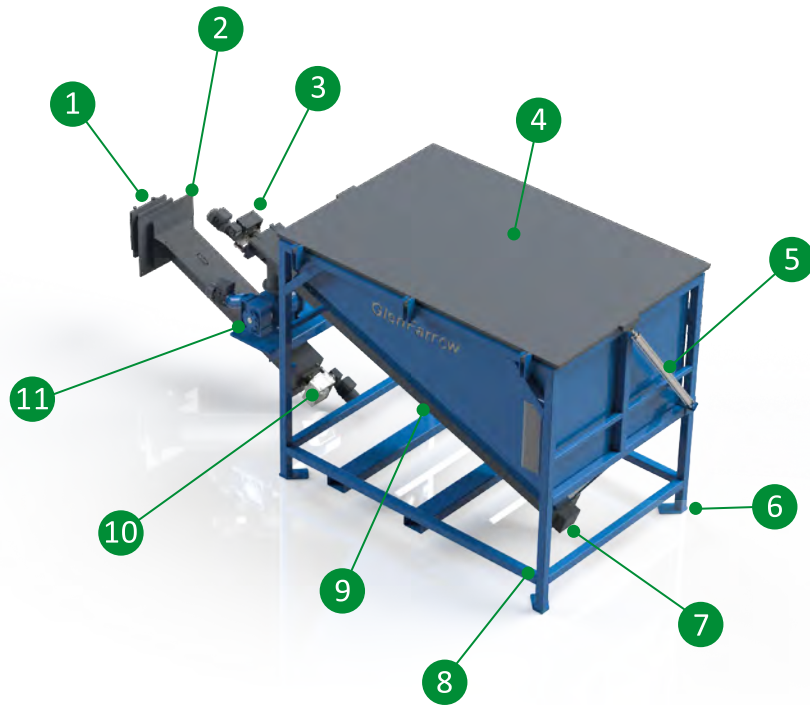
# Configuration options (right)



# Configuration options (left)



## General overview



- 1 Boiler plate entry
- 2 Stainless steel cover trims
- 3 High torque hopper auger gear motor
- 4 Aluminium roof
- 5 Pneumatic roof actuators
- 6 Adjustable leveling feet
- 7 Bearing cover

- 8 Fully welded steel construction frame
- 9 6m<sup>3</sup> steel hopper
- 10 High torque stoker auger gear motor
- 11 High torque rotary valve gear motor
- 12 Perspex sight gauges
- 13 Hopper auger
- 14 Forklift lifting points

- 15 Stainless steel knife valve with pneumatic actuator
- 16 Stoker auger
- 17 GF boiler entry chute
- 18 Rotary valve

# Key features



## Hopper

- 6m<sup>3</sup> capacity
- All steel construction for long-life
- Available with aluminium roof to weatherproof outside installations

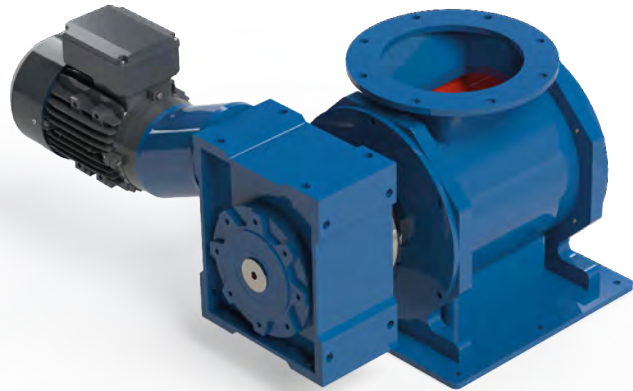
## Hopper auger

- Long auger for effective emptying of hopper
- Powerful double reduction gear motor for long service life and minimal power consumption
- Inspection hatch with integrated safety switch
- Adjustable flange allowing different layout options\*

\*See configuration options page



# Key features

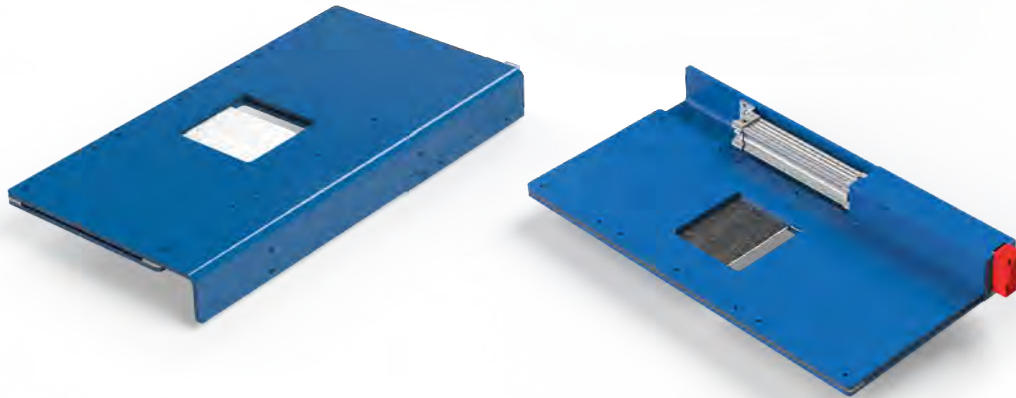


## Rotary valve

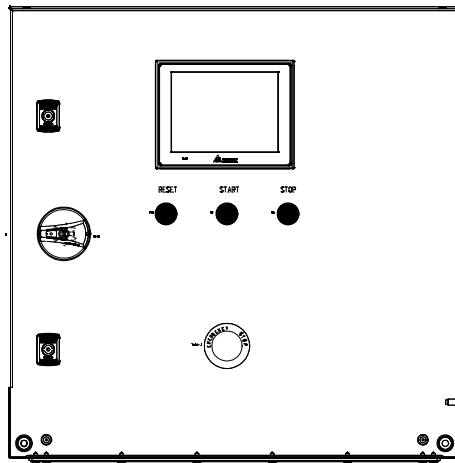
- Extremely high torque double gear motor for effective chopping of oversized chip
- Permanent fire break even in a power cut
- Hardened steel blades for maximum cutting strength

## Pneumatic knife valve

- Stainless steel blade
- Pneumatic actuator for quick and powerful operation
- Graphite high temperature seal with user adjustable shims
- Limit switch to ensure closing of valve



# Key features



## Stoker auger

- Powerful double reduction gear motor for long service life and minimal power consumption
- Short auger for fast movement of material into boiler
- Free floating auger end to ensure no bearings or components are near the combustion chamber

## Control panel

- Touch screen control panel with enhanced features over the normal control panel
- Optimisation for specific fuels and moisture content
- Simple layout and easy to use screen
- Optional remote monitoring



# Benefits of GlenFarrow

## Try before you buy



We understand the importance of investing in a quality product. That's why we invite all customers to a walk through demonstration of the GF auto-feed either at our facility or at an independent customer's site.

## Turnkey biomass solutions



With over 2000 GlenFarrow biomass boilers installed in the UK, we are experts in providing our customers with full turnkey biomass solutions for their heating.

## Full CAD drawings



We are able to produce full CAD drawings for all systems to ensure the best use of space and top quality installations.

## National network of engineers



We have a national network of in-house service engineers so you can be rest assured that GlenFarrow will be there for you wherever you are based in the UK.



## Find us:

**Glen Farrow UK Ltd**  
Glendum Close  
Pinchbeck  
Spalding  
Lincolnshire  
PE11 3DQ

What 3 words: [///ample.rectangular.transmits](http://ample.rectangular.transmits)

01775 722327  
[info@glenfarrow.co.uk](mailto:info@glenfarrow.co.uk)  
[glenfarrow.co.uk](http://glenfarrow.co.uk)

